

FROM THEATRE



'25

HOW TO BOOK

All Tickets

£18/£21/£25 (Main Auditorium) and **£14.50** (Previews & Changing House) unless otherwise stated.

There are no additional booking fees attached to ticket purchases and customers can choose which ticket price option best suits their budget. If you are able, selecting the highest ticket price is the easiest way to lend your support to the Tron, helping us continue to make brilliant theatre.

Online: tron.co.uk

Call: 0141 552 4267

Text: 18001 0141 552 4267

At our Box Office:

63 Trongate, Glasgow G1 5HB

Access

The Tron Theatre is committed to being an accessible venue and to programming Audio Described, Signed and Captioned performances. For full details visit tron.co.uk/access

This brochure is available in large print format

Follow Us Online:

✕ @ f /trontheatre

Tron Café Bar

Open Tue – Sat, 11am–4pm

(extended to 11pm on performance nights)

When eating or drinking with us in the Tron Café Bar, you're also supporting our arts programme. All the profits go straight back in to supporting the venue, allowing us to offer quality cultural experiences, entertainment, and activities for our community.

Welcome to the Tron!

This brochure presents my first full year of programming for Tron Theatre, and we figured we might as well do things a little differently...

As much as was possible I really wanted to give you, our brilliant audiences, an opportunity to engage with us through the whole of the year ahead. To set out my stall, if you will, and give you a taste of what's to come. And what a year to do it in! We're delighted to be supporting Glasgow 850, marking the city's 850th birthday. As custodians of Glasgow's third oldest building, it's a wonderful moment to remind ourselves of how the Tron has contributed to the city flourishing.

We and the rest of the arts sector remain in a time of uncertainty, and at time of writing we continue to await news of our core funding. So, while this brochure represents about 80% of our full ambition for the year, we'll just have to savour the extra as a bonus when the time comes! In all of this I've been supported by an amazing team here in the Tron, and a board of trustees who have been open to my determination not to hold back. We are resolved to invite audiences to forge ahead with us towards an exciting new future.

Our artistic programme sees seasons of bold and contemporary work; placing us at the forefront of creating and presenting high quality, ambitious theatre that represents and reflects the diversity of the world around us, both locally and globally. We want to take you on a journey – entertaining, challenging and celebrating stories that encapsulate all perspectives of life.

We've talked a lot over the past few months about the circular economy of our work, how we can reach into and invest in communities, participants, artists, schools, makers and audiences, learning from these stakeholders and drawing this learning back into the programme we present. We want to present work that builds on the Tron's extraordinary history; work that expands our touring offer and co-producing partnerships, as well as inviting new and more familiar creatives into the building.





Jenima Levick. Photography by Jessica Hardwick.

Our work over the coming year, will span 4 strands, as we seek to:

T Transform

Reimagining classic plays and known titles for our audiences, adapting and reinvigorating work to ensure it speaks to the here and now.

R Re-Discover

Breathing new life into the Scottish canon, sharing these plays more widely with audiences, as well as staging Scottish premieres of contemporary classics.

O Original

Commissioning the very best writers and artists to create new plays and pantomimes for our audiences, developing, and adding to, an already rich canon, as well as supporting and maintaining careers.

N National (*Pride)

Connecting and presenting to our local communities, working with our national partners and co-producers to serve the national touring circuit, extending Tron Theatre's reach and touching more lives.

With all that in mind, it feels wholly appropriate to bring you an in-house programme for 2025 that responds to the theme of **Home and Belonging** – with each of our Tron Theatre Company productions touching on how our sense of place and self are defined by this – whether that's an immigrant seeking the right to remain, an obsession with a flag or finding your way home after an adventure down a rabbit hole.

Alongside work for both our main auditorium and the studio space, we have a continuation of our Community Engagement and Tron Creative programmes, and you can learn more about the opportunities and projects we'll be running across the year and how to get involved on pages **18–22** and **24–25** respectively.

I think there is something for everyone in our 2025 season of work and very much hope you will join us on our new programming journey.

Jenima Levick

Artistic Director



Photography by Joe Connolly. Design by Jamhot.

A Tron Theatre Company production

A VIEW FROM THE BRIDGE

By Arthur Miller

Previews: Fri 21 Feb & Sat 22 Feb, 7.30pm

Tue 25 Feb – Sat 15 Mar 2025, 7.30pm

Matinees: Wed 5 & 12 Mar & Sat 8 & 15 Mar, 2.30pm

AD Wed 26 Feb **BSL** Fri 7 Mar **CAP** Thu 13 Mar

In Brooklyn, longshoreman Eddie Carbone welcomes his wife's cousins to the land of the free. But when one of them falls for Catherine, the beautiful niece that he and wife Beatrice have brought up as their own daughter, they soon discover that freedom comes at a price.

Eddie's jealous mistrust exposes a deep, unspeakable secret – one that drives him to commit the ultimate betrayal not only of his family, but also the close-knit community in which they live, with devastating consequences.

Jemima Levick makes her directorial debut for Tron Theatre Company with Arthur Miller's timeless classic about deep-rooted and dangerously illicit desire.

Directed by **Jemima Levick**

'It always struck me that this [bridge] has commuter traffic going over it all day... They were passing over this area where this Greek drama was taking place and nobody ever thought about it, nobody knew about it... The whole area, the different culture that was down there was unknown to the people on the bridge... This was an immigrant community... They felt separated by language, by background, by the kind of work they did... they had never properly entered the country, they had no papers... But at least they got into the country instead of starving.' – Arthur Miller, Writer

Presented by arrangement with Josef Weinberger Ltd. josef-weinberger.com

More information on wrap-around activities linked to *A View From The Bridge*, including **Tronversations** and our schools programme can be found on page **19** and **20**.

Tron Theatre Company presents

STUDIO3 SEASON

The Studio3 season presents new work from some of the most exciting playwriting voices working in Scotland today. The three plays that form this mini-season were all first commissioned by A Play, A Pie & A Pint and will now get a Changing House studio revival here at the Tron. Each play can be enjoyed as a stand-alone performance; or for the theatre die-hards, as three shows performed across one afternoon.

Stand-Alone Performances

Previews: Sat 26 April: 2pm (Alright Sunshine), 3.20pm (Fleg), 6.15pm (Fruitcake), £11 each

Thu 1 & Fri 2 May, Tue 6, Thu 8 & Fri 9 May, Tue 13, Thu 15 & Fri 16 May

7.45PM, £14.50

3-Show Event Days:

Wed 30 April, 7 & 14 May, Sat 3, 10 & 17 May

2pm, £36



Illustration by BoxDog.

ALRIGHT SUNSHINE

by Isla Cowan

'It's like the sun casts a spell, some hypnotic solar shite, and suddenly ordinary people dae terrible things.'

As PC Nicky McCreadie responds to a 'mass brawl' on The Meadows, it's not just the neds she has to worry about. In the aftermath of violence and suspicion, Nicky discovers she might not be the person she thinks she is.

Alright Sunshine explores gender, power, and the politics of public spaces.

Directed by **Debbie Hannan**



Illustration by BoxDog.

FLEG

By Meghan Tyler

**Citizens
Theatre**

East Belfast. 8th September 2022. The Queen has died.

All Union flags are to be flown at half-mast...which is a big job in East Belfast, there are literally thousands of them.

But when Bobby and Caroline, a deeply patriotic couple, question the background of a council worker “man-handling our fleg”, a dark obsession takes hold of Bobby...

FLEG is an absurdist comedy by Meghan Tyler exploring extreme loyalty and the romanticised notion of the Union.

Directed by **Dominic Hill**

Presented in association with the **Citizens Theatre**



Illustration by BoxDog.

FRUITCAKE

by Frances Poet

GlasgowLife

It's been a long time since things have been right between best pals Holly and Mikey, who all but disappeared during the pandemic. Holly still hasn't forgiven him for being AWOL when her mum was dying, so when Mikey demands she return the Maroon 5 CD she leant him over a decade ago, she's not best pleased.

Anger turns into concern though when she finds out why Mikey has been hiding away. He's convinced he's a modern day Nostradamus. Holly thinks Mikey needs an urgent medical intervention but Mikey hasn't got time for that. He's seen a vision of a catastrophe worse than anything that's come before and he needs Holly's help to stop it.

Fruitcake is Frances Poet's romantic comedy for the existentially weary.

Directed by **Jemima Levick**

Fruitcake Community Tour

As part of Tron Theatre's commitment to connecting with communities in our locale, Studio3's *Fruitcake* will embark on a 6-venue tour in partnership with Glasgow Life from 22-31 May. We recognise the importance of taking our work out of the Trongate to reach new audiences across the city, and the community tour of *Fruitcake* will help us make brand-new connections with Glasgow folks in their own neighbourhoods. We'll be visiting community centres in Barlanark, Barrowfield, Whiteinch, Barmulloch, Knightswood and presenting a special performance at the Lodging House Mission.

More information on how to join the *Fruitcake* **Tronversation** can be found on page 19.



Jordan Young, Photography by Tommy Ga-Ken Wan.

A Tron Theatre Company production

MAN'S BEST FRIEND

By Douglas Maxwell

Previews: Thu 19 – Sat 21 Jun, 7.30pm

Tue 24 Jun – Sat 12 Jul, 7.30pm

Matinees: Sat 5 & 12 July, 2.30pm

AD Wed 25 Jun **CAP** Thu 3 Jul **BSL** Fri 11 Jul

Walking his neighbours' dogs kept Ronnie together after a very difficult lockdown. But when a series of mishaps result in the dogs slipping their leads and disappearing off into the woods, Ronnie is forced to take chase and confront some hard truths.

Man's Best Friend is Douglas Maxwell's hilariously heart-warming story about the give-and-take of companionship.

Directed by **Jemima Levick**

'I had my debut play staged in the Tron, way back in 2000. Since then, every time I've had work on there it's felt special. The humour, sadness and hope in my writing tends to strike a chord. A one person show is an intimate thing. But it can create a powerful theatrical connection between a skilled storyteller and an audience, built in empathy, imagination and shared experience, which in the end becomes something much bigger. That's also what Man's Best Friend is about. Our need to connect with the world, to be of use, to be bigger. And dogs. It's also about dogs.' – Douglas Maxwell, Writer

Man's Best Friend will be touring in Autumn 2025, visiting cities and towns across Scotland including: Aberdeen, Ayr, Dundee, Edinburgh, Greenock and Inverness.

More information on how to join the *Man's Best Friend* **Tronversation** can be found on page 19.

A Tron Theatre Company and Traverse Theatre Company co-production
in association with National Theatre of Scotland

BLACK HOLE SIGN

By Uma Nada-Rajah

Previews: Fri 19 & Sat 20 Sep, 7.30pm

Tue 23 Sep – Sat 4 Oct, 7.30pm

Matinees: Sat 27 Sep & Sat 4 Oct, 2.30pm

AD Wed 24 Sep **CAP** Thu 25 Sep **BSL** Fri 3 Oct



When a hole appears in the roof of a crumbling and understaffed A&E department, patients, porters and nurses do what they must to make it through the night.

Senior Charge Nurse Crea strives to deliver safe and effective care while porter Hamish angles after a date. Staff nurse Ani juggles her bursting caseload, knowing that no one has come to Mr. Hopper's bedside for his final moments. Octogenarian Tersia is trapped in a disco-fuelled fever dream while a disgruntled Fred Turnbull prepares his strongly worded complaint. And student nurse Lina has No. Idea. What. Is. Going. On.

Personal principles clash with professional obligations as three generations of nurses and one 'long in the tooth' porter are pushed towards breaking point.

Written by practising NHS critical care nurse Uma Nada-Rajah, directed by Traverse Artistic Director Gareth Nicholls, *Black Hole Sign* takes a razor-sharp scalpel to the absurdities, tragedies and hilarity within one of our most beloved but besieged institutions.

An exploration of changing attitudes towards an institution once world renowned, the play asks what we want for the future of our National Health Service and, crucially, who will hold it together when it all falls down?

Directed by **Gareth Nicholls**

Black Hole Sign will run at the Traverse Theatre, Edinburgh 8-18 October 2025. traverse.co.uk

Originally commissioned by Traverse Theatre.

'I'm a nurse in my day job and have been a nurse for a long time. There is something so funny and tragic about day-to-day life in hospital, the way that routine and paperwork brush up against the grand processes of human existence. When you're born you get a birth certificate. When you die you get a death certificate. I wanted to capture that sense of absurdity and put it into a play that will make people laugh or cry. And at a time when there are a lot of questions circulating about the future of the National Health Service, I hope Black Hole Sign will make audiences think about the significance of care in modern society.' – Uma Nada-Rajah, Writer

More information on wrap-around activities linked to *Black Hole Sign*, including **Tronversations** and our schools programme can be found on page **19** and **20**.



Illustration by Barry Thompson. Design by Jamhot.

A Tron Theatre Company production

GALLUS IN WEEGIELAND

By Johnny McKnight

Previews: Fri 21 – Sun 23 Nov 2025, £17

Tue 25 Nov 2025 – Sun 4 Jan 2026, times vary

£21/£24/£28 – Tickets on sale 4 Feb 2025

AD Wed 3 Dec, 7pm, Sat 13 Dec, 2pm **BSL** Fri 5 Dec, 1pm, Sat 6 Dec, 7pm, Sun 7 Dec, 1pm
RELAXED Wed 10 Dec, 7pm

Winner of the UK Pantomime Awards Best Panto (Under 500 Seats) 2024

The West End is in crisis. Our beloved Gallus has their ballet exam today and can't remember the difference between good toes and naughty toes. Then, to make matters worse, their best pal Dinah The Cat (if a feline bezzie is good enough for Taylor, it's good enough for Gallus) has vanished. So Gallus decides to skip their dance exam and go searching for Dinah down that mysterious-looking pothole, finding themselves in a land full of mystery and wonder. Dundee. Jokes... Gallus has ended up in...

WEEGIELAND: a winter wonderland populated with strange-talking creatures, a maniacal power-hungry Queen and her son Knavey (quite possibly the hottest Harry Styles rip-off the pantosphere has ever seen).

Will Gallus ever find their beloved Dinah The Cat? Will Knavey declare his love for Gallus and live happily ever after? Or will the evil Queen of Hearts stop true love in its tracks by demanding OFF WITH THEIR HEADS? Find out in this year's Tron panto.

Directed by **Sally Reid**

Designed by **Kenny Miller**

Composer & Musical Director **Ross Brown**

'I am over the moon to be revising what was once Alice in Weegieiland, and give it an all-new 'gallus' spin for 2025. Don't worry - refresh does not mean recycled, it means putting it all in the blender and making the show even wilder. More jokes, more audacious audience participation and more tunes guaranteed to get you on your feet. We can't wait to see you there!' – Johnny McKnight, Writer

CONNECTING WITH OUR LOCAL COMMUNITIES

Our community engagement programme is the thread that weaves all that the Tron Theatre does into and out of our local communities. Whether that be young people, under-represented characteristic groups, those experiencing disadvantage or our local schools' community, we believe that by working together, not only can we explore creatively, but also learn from, about and with each other.

Bringing together participants with a range of life experiences and perspectives, we seek to spread the net of inclusion and experience of the arts, enriching the cultural lives of people living in the east end and within Glasgow City more widely, by encouraging their participation as both audience and artists.

Why take part? The simple answer: it's great fun! And with so many opportunities to develop new artistic and social skills and meet new people, it's an exciting time to become part of the Tron family. Sessions will be delivered in the Tron Theatre itself, and outwith the building, in community settings as part of our commitment to meeting and working with new people throughout the year.

We look forward to making these new connections as well as continuing already established relationships.



Photography by Tommy Go-Ken Wan.

2025 PROJECTS

TRONVERSATIONS aim to build effective and meaningful partnerships with a wide range of communities, reflecting the rich cultural landscape of our city. We start creative conversations, delivering advocacy-style engagement and organising theatre visits that encourage new audiences to engage with and visit the Tron for the first time.

We'll start up **Tronversations** for four of our 2025 productions: *A View From The Bridge*, *Fruitcake*, *Man's Best Friend* and *Black Hole Sign*.

For *A View From The Bridge* we are looking to connect with local groups working with refugee communities.

For *Man's Best Friend*, we are looking to connect with groups working in the field of men's mental health.

For *Black Hole Sign* we are looking to connect with anyone locally who works in the NHS.

For *Fruitcake* we are looking to connect with local groups working in the fields of mental health and wellbeing.

OUR SHOW/YOUR SHOW will connect young people, local community groups and other partners with Tron Theatre Company's 2025 productions and the processes involved in bringing these works to the stage. We will host two building-based ensembles, alongside opportunities for Glasgow-based groups to link in to **Our Show/Your Show** projects on *A View From The Bridge*, *Man's Best Friend* and *Black Hole Sign*.

MONDAY ENSEMBLE (for ages 14-17yrs)
6.30pm-8.30pm, 10-week terms, £150 per term
Taster session: **Monday 20 January**

THURSDAY ENSEMBLE (for ages 18yrs+)
7-9pm, 10-week terms, £150 per term
Taster session: **Thursday 16 January**

PAY IT FORWARD - APPLYING FOR TICKETS
In 2024, we welcomed 16 groups from across Glasgow to the Tron to enjoy a theatre experience, giving away over 600 free tickets.

This work is made possible by generous donations through our **Pay It Forward** scheme and helps us to make connections with local children and families who might not otherwise be able to visit the theatre.

Applications for **Pay It Forward** tickets in 2025 will open in week beginning **4 August 2025** for community groups and organisations. Details on how to apply and the application link will be available on our website at **tron.co.uk/pay-it-forward** from this date.

If you'd like to get involved in any of our Community Engagement projects for 2025, contact Creative Learning Manager, Lisa Keenan on **lisa.keenan@tron.co.uk** for more information. Please note that capacity is limited within the **Tronversations** and **Our Show/Your Show** programmes.

SCHOOLS PROGRAMME

Our approach to working with schools focuses on fostering longer-term partnerships across the academic year. In 2024-25, we worked with Eastbank Academy, Rosshall Academy, St Mungo's Academy, St Roch's Secondary School and Whitehill Secondary School. These partnerships will extend into the 2025-26 academic year, with these schools being joined by another five Glasgow secondary schools. Opportunities for schools will include:

Production Resources

Production resources will give students an insight into the theatre-making process. Schools will be offered a series of pre-show prompts designed to encourage students to actively think about acting, directing and design choices as they watch a performance.

Post-show workshops will give students the opportunity to reflect on and interrogate the choices made by actors, designers and the director, as well as explore how they might approach their own staging of the play.

Workshops are designed to help students develop critical thinking around live performance, with reference and relevance to questions found in SQA Drama exam papers.

Follow-up resources will also be made available, including interviews with cast and creative team members, script extracts and rehearsal room access.

Production resources will be available for *A View From The Bridge* and *Black Hole Sign*.

Tron Ambassadors

Re-imagining the traditional work placement, Tron Ambassadors is a year-long work experience programme for 14–18-year-olds interested in finding out about careers and training in the creative industries.

Activities include seeing and reviewing performances, backstage tours and practical workshops where Ambassadors will work with different Tron departments, identifying and developing key creative and transferable skills for career pathways. There is also the opportunity to work towards a nationally recognised Silver or Gold Arts Award qualification.

Recruitment for the 2025–26 academic year will begin in **June 2025**, when more information will be available on our website.

Tron Take Over

A project for young people to gain experience of working within the creative industries.

In 2025 we will work with ten schools from the east end of Glasgow who will each be offered two taster workshops open to **S4, S5 and S6 pupils**. Workshops will explore non-performance roles in the arts, with a follow up CV workshop to help identify transferable skills.

Everyone taking part in these workshops will have the opportunity to apply to be involved in the **Tron Take Over** project through a 'formal' application process. This process will include shortlisting, a recruitment workshop and interview, and successful applicants will be offered a role in the **Tron Take Over**.

The Take Over group will work with the *Gallus in Weegieland* team, exploring the range of backstage roles involved in bringing the pantomime to the stage, including writing, directing, stage management, design, sound design, marketing and front of house. Working with Tron staff, participants will 'take over' the Tron, delivering an extract from *Gallus in Weegieland* on stage to parents, carers and teachers, as a curtain-raiser to a special performance of the pantomime.

If you are interested in any of our opportunities for schools, please contact Lisa Keenan, Creative Learning Manager at lisa.keenan@tron.co.uk

VISITING PROGRAMME

Alongside work produced in-house by Tron Theatre Company, the visiting company touring programme is central to the Tron's strategy for diversifying audiences. It's our opportunity to present some of the most exciting, innovative, socially and politically relevant work touring today, and to forge relationships with key artists and theatre-makers that will, we hope lead to longer-term partnerships and support our ambition to make deeper and more relevant connections with audiences.

The visiting company programme supports and augments the productions we create in-house, and helps us to push the boundaries of what our audiences can expect from the Tron Theatre's programme in terms of both form and content. It enables us to platform companies and artists that we're excited about – those local to us in Glasgow but also those coming to us from further afield – bringing new voices, fresh perspectives and exciting approaches to storytelling. We aim to source the best work from the Edinburgh Festivals and bring it to our stage here in Glasgow, encouraging visiting companies to see us as their 'home base' when touring to the city.



Visit tron.co.uk/whats-on for details of the visiting company programme for January – June 2025.

The visiting company touring programme for the second half of the year will be available to book from late July.

TRON ASSOCIATE ARTIST

Our renewed Associate Artist programme has been established to support projects that have a specific enquiry that is both connected to and embedded in our local community, the east end of the city.



Grounded in the belief that hospices are wonderful places built on principles of care, support, collaboration, generosity and valuing each individual, this project will be a celebration of the hospice movement and the impact it has had on people's lives. It will also be recognition of the acute challenges that are faced every day by the hospice's patients, carers, staff and volunteers.

Driven by the right of all people to access and enjoy art even during the most challenging of times, this project will bring creative activities and conversations into the work of the hospice. Victoria will work collaboratively with patients, carers, staff and volunteers who will use creative exploration to tell the stories that are important to them.

As part of this project, Victoria's role will serve the Tron's broader organisational learning, supporting the development of compassionate and well-informed bereavement and carers policies.

With the support and infrastructure of the Tron, our Associate Artist will have the opportunity to pursue their own enquiry, whilst at the same time sharing their skills, expertise and learning back in to the Tron to help us evolve our organisational practice.

Victoria Beesley will be the Tron Theatre's first pilot Associate Artist, delivering in the communities that surround us. She will work with the Marie Curie Hospice in Springburn, north east Glasgow, exploring the breadth of stories and experiences within the hospice.



TRON CREATIVE

The Tron looks forward to engaging with the thriving freelance community of artists and creatives, be that in training, early or mid-career, who live and work here in Glasgow and across Scotland.

Tron Creative feeds our artistic programme, forging dynamic pathways for theatre-makers to develop their craft and their practice in meaningful and ambitious ways. Our hope is that this programme really enables theatre-makers including directors, designers, technicians, writers, to work at their best, deliver brilliantly, and bolster their careers, be that a more assured pursuit of their own artistic enquiry, or a project that will live on the Tron stages in the future.

OUTSIDE EYES

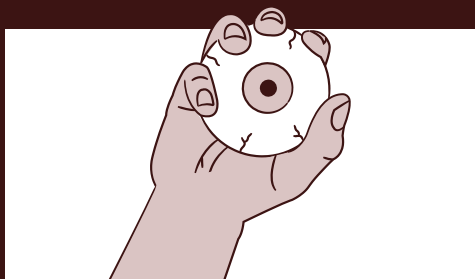
Tue 15 Apr & Tue 2 Sep

7.30pm, £7.50

Outside Eyes, the Tron's annual scratch-night is so good we're doing it twice! Outside Eyes presents a selection of brand new ideas from theatre-makers and live artists to an audience keen to see the boldest new performance Glasgow has to offer.

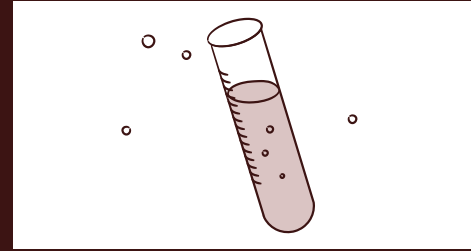
The line-up for each Outside Eyes 2025 event will be announced online closer to the time.

Artists who have a performance idea that needs working out in front of an audience will have two opportunities to apply to take part in 2025.



OUTSIDE EYES SPRING applications for the April event open on **Monday 6 January 2025**. The deadline for applications will be **Monday 3 February**, with all applicants notified of the outcome by **Monday 24 February**.

OUTSIDE EYES AUTUMN applications for the September event open on **Monday 26 May**. The deadline for applications will be **Monday 23 June**, with all applicants notified of the outcome by **Monday 14 July**.



LABWEEK

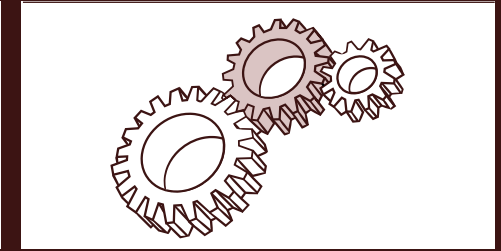
LabWeek is a weeklong residency opportunity for theatre-makers to play and experiment with an idea. **LabWeek** aims to provide support that will move a project forward both creatively and logistically. The residency includes a week in the Changing House and a £3,500 budget.

LabWeek SUMMER will take place from **7-11 July 2025**.

LABWEEK SUMMER applications will open on **Monday 17 March 2025**. The deadline for applications will be **Monday 14 April**, with all applicants notified of the outcome by **Monday 12 May**.

LABWEEK WINTER applications will open in October – keep an eye on the Tron Creative pages of our website for further information.

For more information on Tron CREATIVE projects, including upcoming deadlines, guidelines and how to apply, please visit tron.co.uk/creative



MAKING SPACE

Making Space is our initiative that offers up last-minute rehearsal space in our building at vastly reduced rates for artists and theatre-makers. Dates and details of spaces available will be regularly updated on our website – visit tron.co.uk/creative/making-space for more information.



Image: Alan Wylie.

MICHAEL BOYD AT THE TRON: A COMMEMORATION IN PHOTOGRAPHS

Jun 2025 – Jan 2026

FREE

The visionary work of Michael Boyd put the Tron Theatre on the map, both nationally and internationally. His unforgettable productions included Ted Hughes' *Crow*, Janice Galloway's novel *The Trick Is To Keep Breathing* and *Macbeth* with Iain Glen. These shows, and many more, live on in the hearts and minds of Scottish audiences.

Under Michael's leadership, the Tron became a home for Scottish theatre artists. He welcomed and encouraged actors such as Forbes Masson, Peter Mullan, Siobhan Redmond, Alan Cumming, writers such as David Kane, Peter Arnott and Chris Hannan and composer Craig Armstrong.

At the same time, Michael developed international collaborations with Russia and Quebec. His productions of Michel Tremblay's *The Guid Sisters* and *The Real World?* toured internationally and began a Scottish-Quebecois cultural relationship that still exists today.

A huge fan of Scottish variety, Michael began the tradition of the famous Tron Theatre pantomime, initially commissioning Craig Ferguson, Peter Capaldi, Forbes Masson and Alan Cumming to write and perform in them. He was very happy that this tradition still flourishes, forty years after he arrived as Artistic Director.

Michael died in August 2023. To celebrate and remember him, we have invited Michael's long-term artistic collaborator, Tom Piper and his partner, Caroline Hall to curate an exhibition of his work.

The exhibition will also celebrate the work of Scottish theatre photographers from that time, especially Sean Hudson. Like Michael, Sean died way too soon in 1997.

I look back on my time at the Tron with enormous fondness and a lot of pride. It took about five years to build up a head of steam. After that we couldn't go wrong. Everything we touched while I was at the Tron seemed to work. It was where I found my voice as a director.

Michael Boyd talking to the Herald 2022

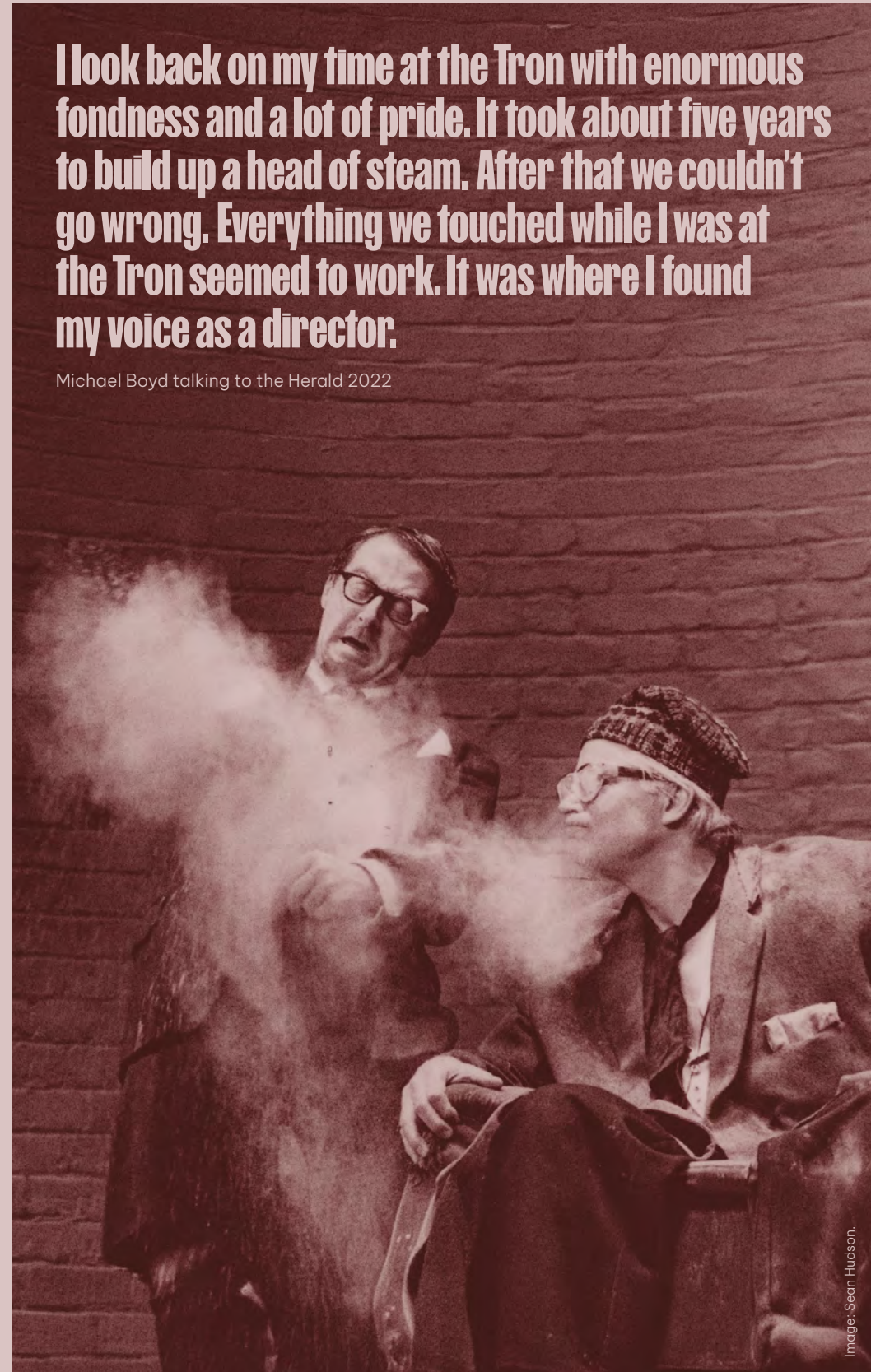


Image: Sean Hudson.

SUPPORT YOUR LOCAL THEATRE

More than ever before we need your contributions to support the work of our creative community, offer opportunities to young people and deliver outreach work in our immediate locale and across the city. You support our work every time you visit the Tron.

There are ways to get involved to suit every person and pocket:

Become a **Tron Champion** or buy a gift membership for someone special.

Donate online or whilst buying tickets.

Choose the highest ticket price option – we don't apply any booking fees so any additional income enables us to do more.

Come on board as a **Sponsor** or **Corporate Partner**.

Support the long-term future of the Tron by **leaving us a gift in your will**.

Earn donations for the Tron when **shopping online via Easy Fundraising**.

For more information on how you can support the Tron Theatre visit tron.co.uk/supporting_the_tron_theatre or email: development@tron.co.uk

BECOME A TRON CHAMPION

With our new 2025 vision, mission and plan we are refreshing our patron scheme, to ensure our Tron community are offered an opportunity to support the Tron Theatre, both on stage and off.

Our Tron Champions support the heart and soul of our company, generously accompanying our present circumstances, while also protecting our future. Once a year, we ask our Champions to make a donation, receiving in return a range of benefits.

There are 4 levels of Champion membership:

Bronze £150 Per Year

Join a community that loves and values theatre and the work of the Tron

Named in our printed materials

Quarterly newsletter

Invites to Champion member events

Silver £250 Per Year

Join a community that loves and values theatre and the work of the Tron

Named in our printed materials

Quarterly newsletter

Invites to Champion member events

Discounted entry to Tron special events

Gold £500 Per Year

Join a community that loves and values theatre and the work of the Tron

Named in our printed materials

Quarterly newsletter

Invites to Champion member events

Guest invitations for two people to Tron special events

Platinum £750 Per Year

Join a community that loves and values theatre and the work of the Tron

Named in our printed materials

Quarterly newsletter

Invites to Champion member events and press nights

Guest invitations for two people to Tron special events

Guest invitations to annual pre-season launch event

All levels of the Tron Champion patronage comprise a benefits value detailing the actual cost of membership to the charity. These benefits can be purchased separately at this price. Any amounts given over and above this benefits value are given freely as a donation towards the work of Tron Theatre and are eligible for Gift Aid. All donations are non-refundable. **Bronze:** Donation £130/Benefits £20, **Silver:** Donation £210/Benefits £40, **Gold:** Donation £430/Benefits £70, **Platinum:** Donation £600/Benefits £150.

To become a Tron Champion please contact: development@tron.co.uk

PAY IT FORWARD

Pay It Forward is the Tron Theatre's fundraising initiative enabling local community groups working with children, families and adults experiencing disadvantage to attend a performance of our Christmas panto and Tron Theatre Company productions throughout the year, for free.

Since we launched the **Pay It Forward** scheme we have raised over £96,000 and gifted free tickets to over 3,800 people. We have worked with a diverse range of local charities and community groups to involve their service users including NSPCC, Scottish Refugee Council, Down Syndrome Scotland, Women's Aid, SAY Women, Saheliya, LGBT Youth Glasgow, Marie Curie, Move On, Geeza Break, South Lanarkshire College, PEEK, Quarriers, Turning Point, Kickin' On, National Autistic Society, Enable Glasgow and FASS (Families Affected by Alcohol and Substance Abuse), Cranhill Development Trust, Ferguslie Men's Support Group, Glasgow North East Carers Centre, Parkhead Youth Project, Tollcross YMCA, Who Cares? Scotland, Blue Triangle and New Young Peers Scotland.

We raise the vast majority of funds from public collections during our annual panto, along with cash or in-kind contributions from local businesses who in the past have included: Davidson Asset Management, GAP Group, Tesco Communities Fund, GH Digital Print, Belle and Blackley, ALBA Facilities Services, WELLA and Superdrug.

Donations to the Pay It Forward fund can be made at any time via tron.co.uk/donate

Hiring the Tron for your event

Tron Theatre can host a wide range of events including seminars, conferences, meetings, training sessions, book launches, media events, exhibitions, rehearsals, workshops, parties and much more.

For more information about hiring the Tron for your event please call **0141 552 4267**.

The Tron Gratefully Acknowledges Support From

Creative Scotland

Corporate Partners

G.H. Digital Print

Patrons 2024-25

Maureen Aitken	Penny Forshaw	Helen McLaren	Fraser Reid
Julie Austin	Mike Glancy	Michelle McMillan	Sylvia Rossi
Lorna Baird	Susan Hunt	Caroline Martin	Fred & Irene Shedden
Bronagh Bell	Eleanor Hyland	Iain & Alison Michael	Craig & Paula Stark
Alan Boyd	John & Agnese Keeper	Alison Mitchell	Mandy Stewart
Kati Byrne	David Lightbody	Gordon Morgan	Keith Stoddart
Alison Cheyne	Yvonne Lindsay	Helen Morton	Linda Taylor
Lucy Christopher	Andrew Lockyer	Derek Murray	Therese Taylor
Thomas Collins	Stewart MacKay	Kenneth Murray	Amy Tran
Stewart &	Caroline Martin	Norma Oliphant	Cara Viola
Frankie Coulter	Susan McBride	Noelle O'Rourke	George Walker
Allan Cowan	Colin McCredie	Patricia Orr	Lorraine Ward
Ruth Crawford	Fiona McDonald	Liam Paterson	Andy & Sandra West
Monica Deans	Frank & Kathleen	Amy Preston	Rachael Wilson
Rhona Deb Little	McGoldrick	Rita Rae	
Angela Donoghue	Tony McGoldrick		

Special thanks to Helen Jean Millar, a long-time Tron Theatre supporter, who generously left us a gift in her will for our work.

Trusts & Foundations

Gannochy Trust | Glasgow City Council Green Grant | Dr Guthrie's Association
Kilpatrick Fraser Charitable Trust | John Mather Trust | Wolfson Foundation

You too can play an important role in the Tron Theatre's future. For more information email development@tron.co.uk Tron Theatre Ltd is a Scottish Registered Charity No: SC012081



TRON-GO-UK

0141 552 4267 |     trontheatre

Tron Theatre Ltd is a Scottish Registered Charity No: SC012081. Design by thisisjamhot.com